

HOW TO SELF-INJECT GUIDE



Please see important safety information inside this brochure and Full Prescribing Information, including boxed WARNING, at the link below for additional important information.

<http://products.sanofi-aventis.us/lovenox/lovenox.html>

How to Self-Inject Guide

At first, it may seem like a lot to remember, but injecting LOVENOX® will be much easier after you do it a few times. Be sure to discuss these steps with your doctor before you administer LOVENOX® for the first time.



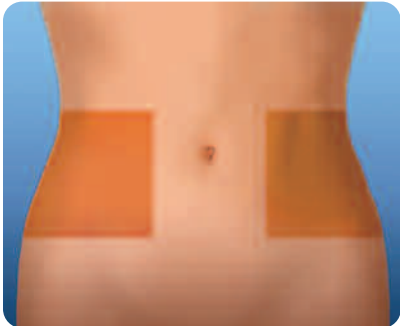
1

Wash and dry your hands thoroughly.



2

Sit or lie in a comfortable position, so that you can see your abdomen.



3

Choose an area on the right or left side of your abdomen, at least 2 inches from your belly button. Think “love handles.”



4

Clean the injection site with an alcohol swab. Let dry.



5

Remove the needle cap by pulling it straight off the syringe and discard it in a sharps collector.



6

Hold the syringe like a pencil in your writing hand.

Continued on next page>



Please see important safety information on page 5 and Full Prescribing Information, including boxed WARNING, at the link below for additional important information.

<http://products.sanofi-aventis.us/lovenox/lovenox.html>

How to Self-Inject Guide (continued)



7

With your other hand, pinch an inch of the cleansed area to make a fold in the skin. Insert the full length of the needle straight down—at a 90° angle—into the fold of skin.



8

Press the plunger with your thumb until the syringe is empty.



9

Pull the needle straight out at the same angle that it was inserted, and release the skin fold.



10

Point the needle down and away from yourself and others, and push down on the plunger to activate the safety shield.



11

Place the used syringe in the sharps collector.



Please see important safety information on page 5 and Full Prescribing Information, including boxed WARNING, at the link below for additional important information.

<http://products.sanofi-aventis.us/lovenox/lovenox.html>

Important Safety Information

Certain procedures, called “epidural/spinal anesthesia” and “spinal puncture,” may be used as a normal part of hospitalization. Patients requiring these procedures while being treated with LOVENOX® (enoxaparin sodium injection) or other low-molecular-weight heparins are at risk of developing a blood clot in or around the spine. This condition may result in long-term or permanent paralysis.

LOVENOX® is not the same as “unfractionated heparin” or other drugs called “low-molecular-weight heparins.” Therefore, these drugs cannot be used interchangeably with LOVENOX®.

LOVENOX® can alter the blood’s ability to clot. Patients treated with LOVENOX®, who also have conditions affecting the clotting system, must be carefully monitored by their physician. Adjusting the dose of LOVENOX® may be necessary for patients who have certain forms of kidney disease. All patients receiving LOVENOX®, as well as other anticoagulants, should be carefully monitored for bleeding by their physician. Bleeding can occur at any site with LOVENOX® use.

Platelet drops, known as “thrombocytopenia,” can occur with LOVENOX® use. Cases of a related condition called “heparin-induced thrombocytopenia” have been observed in clinical practice. If you have had this condition, you must notify your healthcare professional. Your physician may perform blood tests to monitor for the occurrence of any drop in platelet count.

The use of LOVENOX® has not been adequately studied in pregnant women with artificial (mechanical) heart valves.

LOVENOX® should not be used in patients with an allergy or sensitivity reaction to the active ingredient called enoxaparin sodium, heparin, or pork products, and in patients with active major bleeding.

Common side effects include mild local reactions or irritation at the site of injection, pain, bruising, and redness of skin.

For specific questions about your health, you should always consult your physician or a qualified healthcare professional who is responsible for your care.

Please see Full Prescribing Information, including boxed WARNING, at the link below for additional important information.

<http://products.sanofi-aventis.us/lovenox/lovenox.html>



Please see important safety information on page 5 and Full Prescribing Information, including boxed WARNING, at the link below for additional important information.

<http://products.sanofi-aventis.us/lovenox/lovenox.html>

Indications and Usage

Prophylaxis of Deep Vein Thrombosis

LOVENOX® injection is indicated for the prophylaxis of deep vein thrombosis, which may lead to pulmonary embolism:

- in patients undergoing abdominal surgery who are at risk for thromboembolic complications;
- in patients undergoing hip-replacement surgery, during and following hospitalization;
- in patients undergoing knee-replacement surgery;
- in medical patients who are at risk for thromboembolic complications due to severely restricted mobility during acute illness.

Treatment of Acute Deep Vein Thrombosis

LOVENOX® injection is indicated for:

- the **inpatient treatment** of acute deep vein thrombosis, **with or without pulmonary embolism**, when administered in conjunction with warfarin sodium;
- the **outpatient treatment** of acute deep vein thrombosis, **without pulmonary embolism**, when administered in conjunction with warfarin sodium.

Prophylaxis of Ischemic Complications of Unstable Angina and Non-Q-Wave Myocardial Infarction

LOVENOX® is indicated for the prophylaxis of ischemic complications of unstable angina and non-Q-wave myocardial infarction, when concurrently administered with aspirin.

Treatment of Acute ST-Segment Elevation Myocardial Infarction (STEMI)

LOVENOX® has been shown to reduce the rate of the combined endpoint of recurrent myocardial infarction or death in patients with acute STEMI receiving thrombolysis and being managed medically or with percutaneous coronary intervention (PCI).

Does LOVENOX® have any side effects?

LOVENOX®, like all medications, may have side effects. **IT IS IMPORTANT TO NOTIFY YOUR HEALTHCARE PROFESSIONAL IF YOU NOTICE ANY OF THE FOLLOWING:**

- Bleeding or oozing from surgical wound • Any other bleeding episodes; for example, bleeding at the site of the injection, nosebleeds, blood in your urine, or if you cough or vomit blood • Spontaneous bruising (a bruise not caused by a blow or any apparent reason) • Pain or swelling in any part of your leg, foot, or hip • Dizziness, numbness, or tingling • Rapid or unusual heartbeat • Chest pain or shortness of breath • Vomiting, nausea, or fever • Confusion

US.ENO.08.02.065
©2008 sanofi-aventis U.S. LLC